



Horus

Wireless Facial Recognition Time Attendance Terminal

The trend of Visible Light Facial Recognition technology have brought user experience of biometric technology to a new height. As one of the biometric industry leaders, ZKTeco launched the second-generation facial recognition terminal—Horus series, named after an Egyptian god, who has the legendary “all-seeing eye” that can clearly observe everything. Horus is one of the most advanced Access Control & time and attendance terminal existing in the market, with incredibly compact size (almost the same size as iPhone XS max) and powerful facial recognition technology offering up to 3 meters recognition distance, ± 30 degree pose angle tolerance, high anti-spoof ability, support on plentiful communication protocols (Wi-Fi, 3G, 4G, Bluetooth) and worldwide network setting, optional fingerprint and RFID card modules, up to 10,000 facial templates capacity, and is compatible with the all-in-one security & time attendance platform ZKBioSecurity and BioTime.

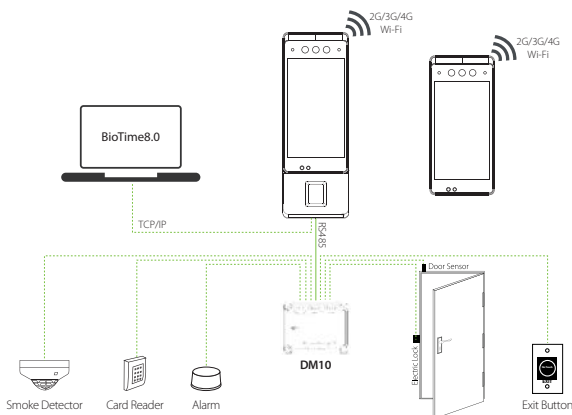
Features

- New height of facial recognition template capacity up to 1: N-10,000 facial templates.
- Anti-spoofing algorithm against print attack (laser, color and B / W photos), videos attack, and 3D mask attack.
- Supports multiple communication protocols: 4G, Wi-Fi, Bluetooth and USB.
- 5-inch smartphone grade IPS touch LCD monitor
- Extensive Fingerprint, RFID, access control (DM10) and TCP / IP communication modules available.
- Extra-large 2MP CMOS with WDR function
- Various further development options: embedded GPS / A-GPS, microphone and PIR sensor

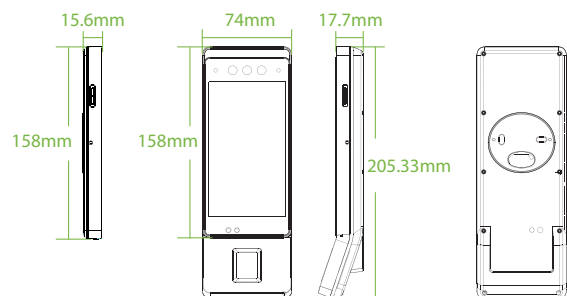
Specifications

	Horus E1	Horus E1-RFID	Horus E1-FP
Picture			
CPU	Quad-core, 1.5GHz		
Android Version	Android 8.1		
Memory	RAM 2GB / ROM 16GB		
Camera	2MP Dual Camera		
LCD	720*1280, IPS touch LCD		
Verification Mode	Face	Face + RFID	Face + Fingerprint + RFID
Face Capacity	6,000 / 10,000 (optional)		
Fingerprint Capacity	N / A	N / A	6,000 / 10,000 (Optional)
ID Card	N / A	MF & Desfire Optional	
Access Control (DM10 Module)	N / A	Optional	
TCP/IP	N / A	10 / 100 Mbps	
Wi-Fi	2.4GHz, 5GHz, 802.11a / b / g / n		
Bluetooth	4.0		
4G Wireless Broadband	GSM: 850 / 900 / 1800 / 1900 WCDMA: 850 / 900 / 1700 / 1900 / 2100 TDD-LTE: B38 / B40 / B41M FDD-LTE: B1 / B2 / B3 / B4 / B5 / B7 / B8 / B12 / B17 / B20 / B28A / B28B'		
USB	USB 2.0 (upto 16G USB Disk)	N / A	
GPS	GPS / A-GPS		
Speaker	90DB (10cm distance)		
Microphone	1m clear voice pickup		
Dimensions	158 * 74 * 15.6mm	205.33 * 74 * 17.7 mm	
Power	12V 2A		
Operating Temperature	-10°C — 50°C		
Operating Humidity	20% — 80%RH		
Certifications	CE, FCC, RoHS		

Configuration



Dimensions (mm)



MySolutions Inc.

Authorized Distributor of ZKTeco Products in the Philippines
 2F 201 Del Monte Ave. Brgy. Masambong QC
 Tel: (02) 8-365-8488 | (02) 8-367-8188
 (02) 8-257-7696 to 99
 Email: sales@mysolutions.ph

V1.0 2020.03.12



Copyright©2020 ZKTECO CO., LTD. All rights reserved.